



SLAN[®]-96P

Real-time PCR system

- ✓ **User-friendly design**
- ✓ **Innovative technology**

PERFORMANCE



Innovative dual 48/48 reaction blocks, increased efficiency and flexibility



Patented precise temperature control technology: well-to-well uniformity with an accuracy of $\pm 0.1^{\circ}\text{C}$



Advanced optical system, reliable, sensitive and calibration free



Much faster, generates accurate results in less than 50 minutes



Professional multiplex detection channels, true 6 plex real-time PCR



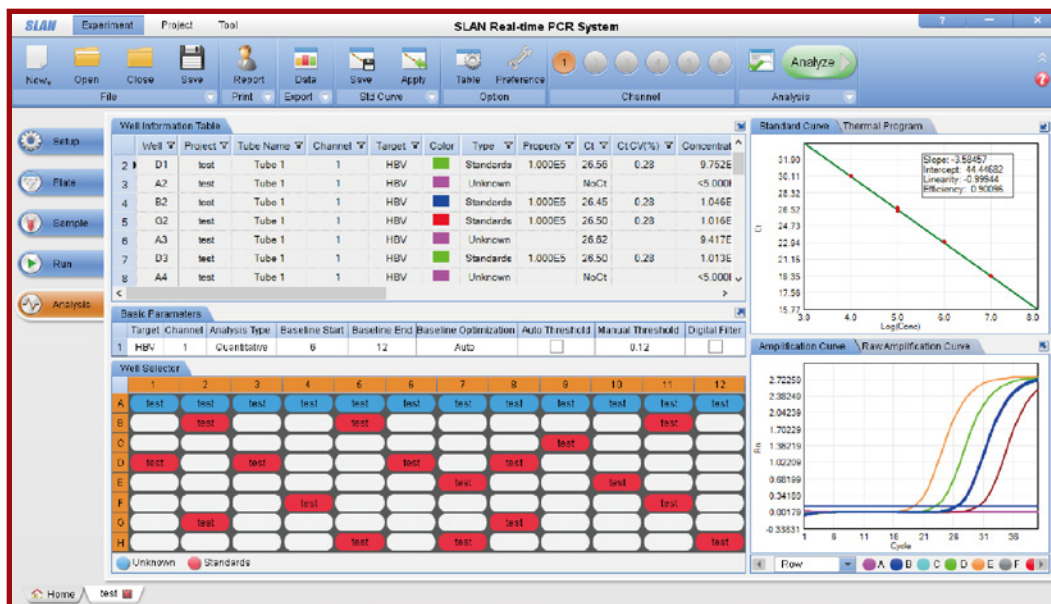
Ideal approach to your HRM study, accurate, sensitive, no need for complicated temperature shift calibration



Outstanding performance, reduces experimental error



Powerful yet easy to use multitasking software, excellent tools for high-quality data analysis



SLAN-96P Multi-tasking Software Interface
(analysis screen)



SPECIFICATIONS

Product Model	SLAN-96P
Sample Capacity	96 wells (dual 48/48 reaction module)
Sample Size	15-50 μ L
Consumable	0.2mL PCR Tubes, 8-tube Strips, 48-well Plates
Parallel Running Mode	Dual Reaction Blocks/Running 2 Tests Independently
Temperature Range	4-99°C
Max Ramp Rate	4.0°C/sec
Temperature Accuracy	\pm 0.1°C
Temperature Uniformity	\pm 0.1°C
Thermal Cycling System	Peltier-based System
Temperature Control Mode	Tube Control/Block Control
Light Source	LED (Maintenance-free)
Detector	High Sensitivity Photoelectric Sensor
Sensitivity	1 copy
Linearity Range	10^0 - 10^{10}
Resolution	Can Discriminate Between 1000 copies and 2000 copies
Excitation	CH1 470nm CH2 530nm CH3 580nm CH4 630nm CH5/CH6 custom-made
Emission	CH1 510nm CH2 565nm CH3 620nm CH4 665nm CH5/CH6 custom-made
Dyes and Probes	CH1 FAM™ /SYBRGreen® CH2 VIC® /HEX/JOE™ /TET CH3 ROX/TexasRed® CH4 CY5™
Hot-lid	30°C~108°C (Default105°C, Adjustable) Electronic Automatic Hot-lid
Power Supply	230VAC, 50Hz
Power Consumption	850VA
Dimensions	380mm x 520mm x 250mm (WxDxH)
Weight	18Kg
Communication	RS232, USB



INNOVATING DIAGNOSTICS FOR ALL

ADDR. : No. 680, Lusong Road, Yuelu District, Changsha, Hunan Province, 410205, P.R.China

TEL. : +86-731-88883176-6116

FAX : +86-731-89736985

MAIL: info@sansure.com.cn / support@sansure.com.cn

WEB: www.sansureglobal.com



SCAN ME

20210822